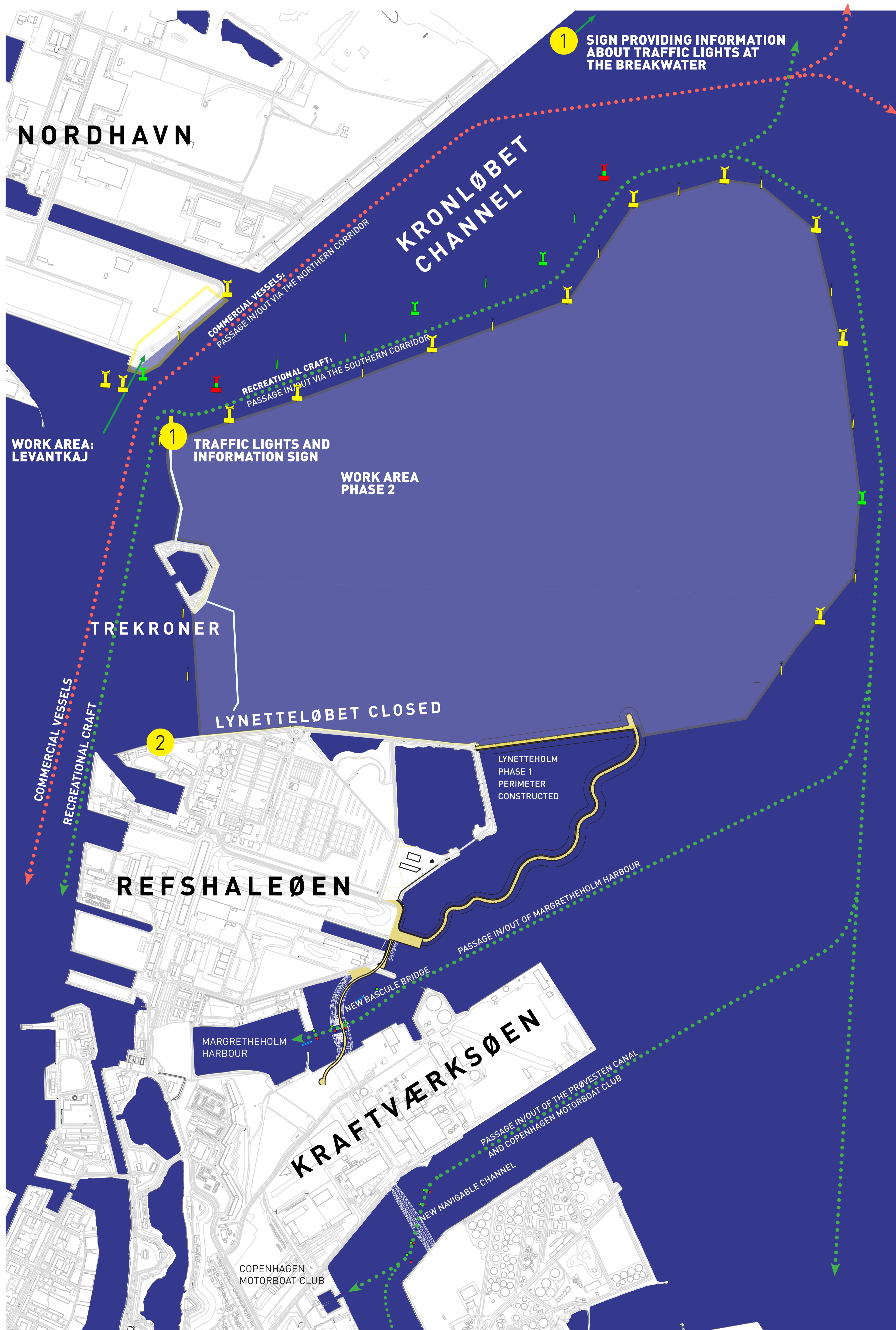


Lynetteholm:

INFORMATION FOR SAILORS, KAYAKERS AND OTHER USERS OF THE PORT OF COPENHAGEN

Planning to sail in the Port of Copenhagen? Then be aware that the Lynetteløbet channel for recreational sailing is closed from 23rd October 2023. This means that all recreational craft must now use the Kronløbet channel when entering and leaving the Port of Copenhagen.

The Lynetteløbet channel is being closed off to allow the construction of Copenhagen's new peninsula and storm surge protection project, Lynetteholm. In the light of this project, new work areas at sea and new safety measures have been established in the Kronløbet channel. The map below is valid until autumn 2024.



Commercial vessels

The **red** dotted line on the map indicates that commercial vessels must keep to the north of the Kronløbet channel.

Recreational craft

The **green** dotted line indicates the route for recreational craft. Recreational craft must keep to the south of the Kronløbet channel.

Sign for the Kronløbet channel

This sign is placed at:

- Northern breakwater, Trekroner Fort
- Nordhavns spidsen, Outer Nordhavn



Sign for the Lynetteløbet channel

This sign is placed at:

- The degaussing bridge facing Yderhavnen (Outer Harbour)



This map is for guidance only.

Always sail in consideration of prevailing conditions, and remember that changes can occur. It is therefore important that you obtain regular updates from Efterretninger for Søfarende/Information for Seafarers.

DOWNLOAD THE KBH HAVN APP TO YOUR PHONE: With the KBH Havn (Port of Copenhagen) app you can keep an eye on wind, weather and water before setting off. You also get suggestions for sailing routes, tips and tricks, easy access to the harbour regulations and more. **Download:** byoghavn.dk/app



BY&HAVN